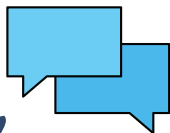


Discover Your Path Toward Recovery

- Supervised outpatient treatment by professionally trained clinicians
- Reduce the risk of opiate overdose and attain a healthier life with long-term sobriety
- Stay empowered with supportive therapy



Connect Now



Text this number for same-day response
719-286-0750

GET IN TOUCH

ADDRESS

2608 Palmer Park Blvd
Colorado Springs, CO 80909

PHONE

Call 719-633-5298
Text 719-286-0750

EMAIL

connect@ascent.care

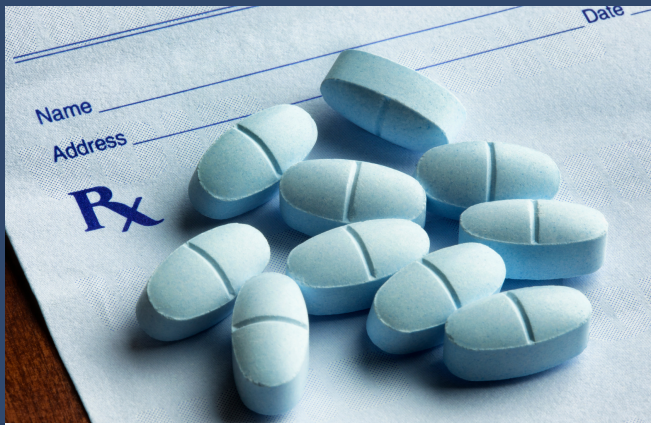
WEBSITE

www.ascent.care

MEDICATION ASSISTED TREATMENT

Outpatient Rehabilitation
Management with a
Collaborative Approach





Medication Assisted Therapy (MAT)

MAT is a SAMHSA-accredited, long-term intervention program specifically created for patients who are in recovery from an opiate type substance use disorder. Medical professionals conduct an individual assessment to determine the appropriate level of treatment and engagement frequency. Outpatient treatment effectively combines medication management and supportive therapy to safely guide patients toward recovery. Buprenorphine & Naloxone, medications approved by the FDA to treat opioid addiction, offer a pain-free recovery experience. When taken as prescribed, it's a safe way to avoid overdose and eventually diminish opioid dependence.



ABOUT US

Ascent Health provides affordable and comprehensive outpatient treatment for those suffering with opiate type substance use disorder. Our staff is dedicated to addressing the underlying causes of addiction with the latest research-supported methods. Services are conveniently available in-person and via telehealth. We have the resources and experience to help you or your loved one move toward a healthy recovery.

PROGRAM OVERVIEW

Individualized Treatment

Treatment plans are individually customized and created with input from the patient and members of the treatment team. With a focus on personalized care and evidence-based practices, Ascent Health is designed to provide patients with the best possible outcomes.

Medication Management

Utilizing American Society of Addiction Medicine (ASAM) guidelines, our team individually assesses each patient to determine the best pharmacological regimen to block the neurotransmitters involved in opioid addiction and withdrawal. Routine monitoring allows us to track progress and make adjustments when needed.

Counseling

Supportive therapy is part of our comprehensive care model. Challenges will be addressed in a collaborative manner to ensure that patients have the proper coping skills and resources to sustain long-term recovery.

